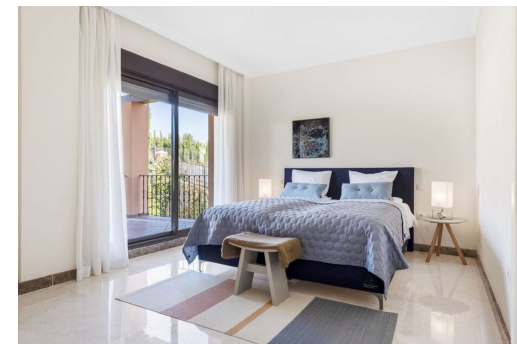


Detached Villa (Ref.: R4083433)



Dormitorios
Bedrooms

3

Baños
Bathrooms

4

Plot m²
Terreno

494

Built m²
m² Construidos

230

Terrace m²
m² Terraza

60

IBI year
Community
Garbage tax

0€ / year
0€ / year
0€ / year

Estepona

850.000€

The western area of Estepona is undoubtedly the area where the most outstanding projects of the moment are concentrated. New infrastructure flourish every day to endow this area with a spectacular future: schools, hospitals, shopping centres, sailing clubs and golf courses. Is a reality to play on a new golf course, designed by Sterling & Martin and built by GTM. The complex has 18 holes PAR 71. Its noble design, with spectacular views of the Mediterranean Sea and Sierra Bermeja and its soft and fun shaping make an idyllic place where tranquility is its hallmark. This is a residential complex composed of 45 detached and semi-detached villas in a unique location, surrounded by lakes and greens on the Golf course. The design of the houses is the expression of style and sturdiness. Spacious houses built to a high standard where you will enjoy the generously sized rooms distributed over two floors. The terraces with views to the golf course and lakes will add a unique experience to your dai-ly life, as your family so richly deserves. The properties The complex offers you 34 semi-detached and 11 detached villas with excellent communal areas, where you will find your new home. The best location, orientation and design await you in an idyllic setting conceived for golf enthusiasts and lovers of peace and quiet. For everyday living or for holidays and there's still more... • Spacious and illuminated rooms to ensure your maximum comfort and the best use of space. • Open ...